

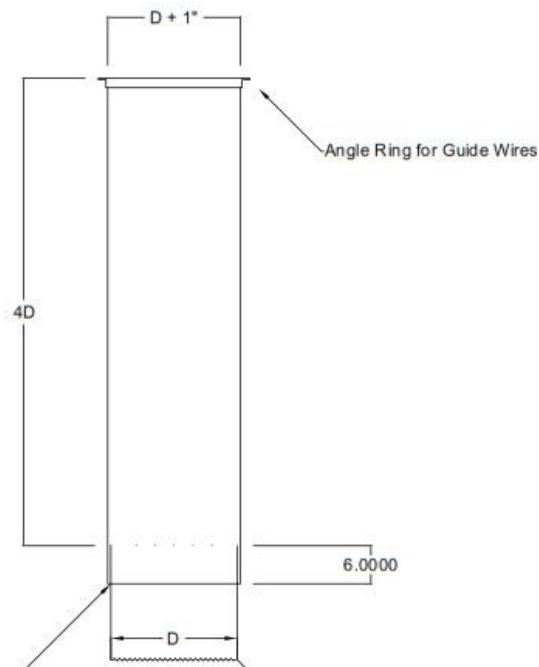


THE COMPLETE DUCT SOURCE
Quality—Delivery—Service—Design—Price

No-Loss Stackheads

No-Loss Stacks or No-Loss Stackheads as they're sometimes called, eliminate the back pressure that causes increased fan resistance. Increased resistance causes the fan to use additional power to maintain the calculate cubic feet per minute (CFM) rate required for the system. To correct this, as you can see in the drawing below, the central exhaust duct is surrounded by the larger duct of the no-loss stack, and extends up higher than the central duct and is open at the bottom. Rain water then falls into the upper part of the larger duct and drains down the side of the no-loss stack and discharges at the bottom. No-Loss stacks are most often ordered in galvanized and stainless steel.

We make sure all of your size and transition needs are taken care of when you order a No-Loss stack for your system.



- Connections: Flanged
- Rolled Lip
- Raw
- Spiral
- Custom

No-Loss Stack