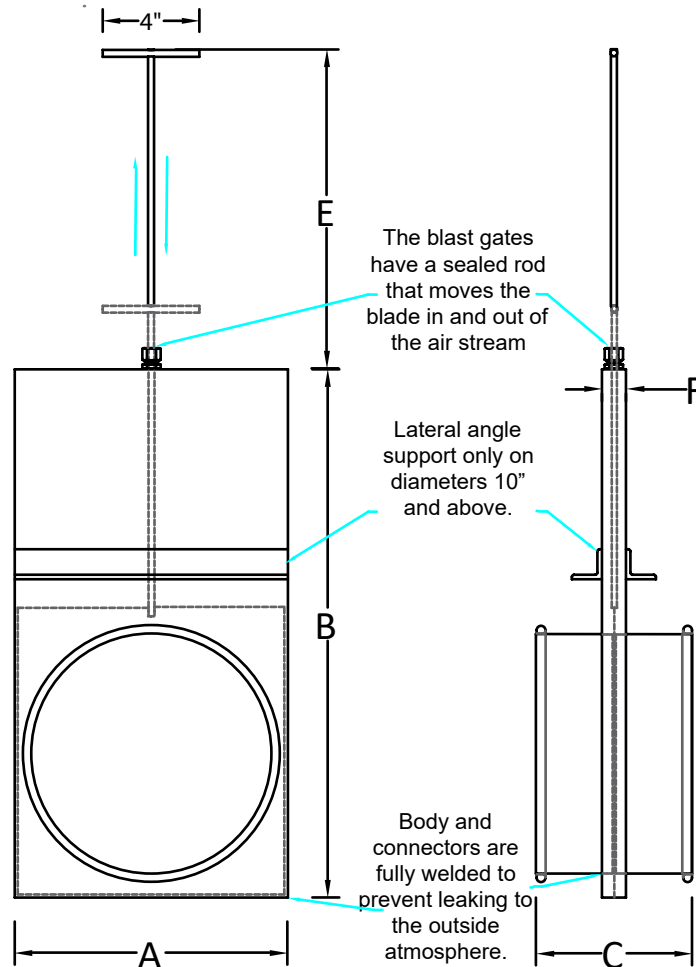




## Manual Blast Gate

- Available in Rolled Lip, Vanstone Flange, Angle Rings
- Material types: Galvanized, Stainless Steel, and Carbon Steel
- Ideal for high moisture systems, leak free to the atmosphere
- Requires 90 psi to operate



ATMBG								
Size Ø"	A	B	C	E	F	Open/Closing shaft Ø	Handle Ø	Cap & Bushing DIA
3	4"	7 1/2	7 1/2	6 1/2	5/8	5/16	3/8	1/4
4	5"	9 1/2	7 1/2	7 1/2	5/8	5/16	3/8	1/4
5	6"	11 1/2	7 1/2	8 1/2	5/8	5/16	3/8	1/4
6	7"	13 1/2	7 1/2	9 1/2	5/8	5/16	3/8	1/4
7	8"	15 3/4	7 1/2	10 1/2	3/4	5/16	3/8	1/4
8	9 1/2	18 1/4	7 1/2	11 1/2	3/4	5/16	3/8	1/4
9	10 1/2	20 1/4	7 1/2	12 1/2	3/4	3/8	1/2	3/8
10	11 1/2	22 1/4	7 1/2	13 1/2	1"	3/8	1/2	3/8
11	12 1/2	24 1/4	7 1/2	14 1/2	1"	3/8	1/2	3/8
12	13 1/2	26 1/4	7 1/2	15 1/2	1"	3/8	1/2	3/8
13	14 1/2	29 1/4	7 1/2	16 1/2	1"	3/8	1/2	3/8
14	15 1/2	30 1/4	7 1/2	17 1/2	1"	3/8	1/2	3/8
15	16 1/2	32 1/4	7 1/2	18 1/2	1"	1/2	5/8	1/2
16	17 1/2	34 1/4	7 1/2	19 1/2	1"	1/2	5/8	1/2
17	18 1/2	36 1/4	7 1/2	20 1/2	1 1/2	1/2	5/8	1/2
18	19 1/2	38 1/4	7 1/2	21 1/2	1 1/2	1/2	5/8	1/2
19	20 1/2	40 1/4	7 1/2	22 1/2	1 1/2	1/2	5/8	1/2
20	21 1/2	42 1/4	7 1/2	23 1/2	1 1/2	1/2	5/8	1/2
22	23 1/2	46 1/4	7 1/2	25 1/2	1 1/2	1/2	5/8	1/2
24	25 1/2	50 1/4	7 1/2	27 1/2	1 1/2	1/2	5/8	1/2