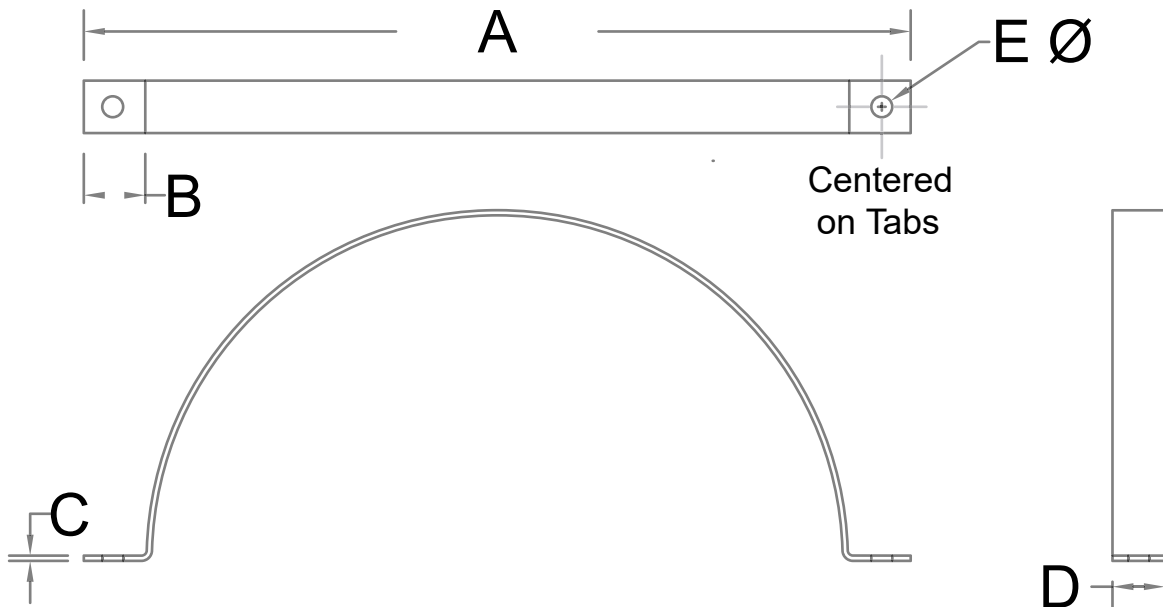




Saddle Hanger

A sturdy, vertically and horizontally stable option, sometimes called a 'pipe hanger', is typically attached to rods or angle supports. This installation provides excellent support and security of the ductwork system. Saddle hangers usually take a bit longer to position and install, so they are often used in conjunction with other hangers



Saddle Hanger						
Pipe Size	A	B	C	D	E	Flat Cut Lengths
	(+ - 1/8)					
3	5 1/4	1	11 Ga.	1	7/16	6 7/16
4	6 1/4	1	11 Ga.	1	7/16	8.21
5	7 1/4	1	11 Ga.	1	7/16	9.66
6	8 1/4	1	11 Ga.	1	7/16	11.18
7	9 1/4	1	11 Ga.	1	7/16	12 3/4
8	11 1/4	1 1/2	11 Ga.	1 1/2	9/16	15 3/8
9	12 1/4	1 1/2	11 Ga.	1 1/2	9/16	17 1/16
10	13 1/4	1 1/2	11 Ga.	1 1/2	9/16	18 11/16
11	14 1/4	1 1/2	11 Ga.	1 1/2	9/16	20 5/8
12	15 1/4	1 1/2	11 Ga.	1 1/2	9/16	21 15/16
13	16 1/4	1 1/2	11 Ga.	1 1/2	9/16	23 1/2
14	17 1/4	1 1/2	11 Ga.	1 1/2	9/16	25
15	18 1/4	1 1/2	11 Ga.	1 1/2	9/16	26 9/16
16	19 1/4	1 1/2	11 Ga.	1 1/2	9/16	28 1/4
17	20 3/8	1 1/2	11 Ga.	1 1/2	9/16	29 11/16
18	21 3/8	1 1/2	11 Ga.	1 1/2	9/16	31 5/16
19	22 3/8	1 1/2	11 Ga.	1 1/2	9/16	32 7/8
20	23 3/8	1 1/2	11 Ga.	1 1/2	9/16	34 9/16
21	24 3/8	1 1/2	11 Ga.	1 1/2	9/16	35 3/4
22	25 3/8	1 1/2	11 Ga.	1 1/2	9/16	37 5/8
23	26 3/8	1 1/2	11 Ga.	1 1/2	9/16	39
24	27 3/8	1 1/2	11 Ga.	1 1/2	9/16	40 5/8
25	28 3/8	1 1/2	3/16	1 1/2	9/16	42
26	30 3/8	2	3/16	2	9/16	44 5/8
27	31 3/8	2	3/16	2	9/16	46 3/16
28	32 3/8	2	3/16	2	9/16	47 11/16
29	33 1/2	2	1/4	2	9/16	49 3/8
30	34 1/2	2	1/4	2	9/16	50 7/8
31	35 1/2	2	1/4	2	9/16	52 5/8
32	36 1/2	2	1/4	2	9/16	54
33	37 1/2	2	1/4	2	9/16	55 3/8
34	38 1/2	2	1/4	2	9/16	57 1/16
35	39 1/2	2	1/4	2	9/16	58 3/4
36	40 1/2	2	1/4	2	9/16	60 5/16
37	41 1/2	2	1/4	2	9/16	61 15/16
38	42 1/2	2	1/4	2	9/16	63 7/16
39	43 1/2	2	1/4	2	9/16	65 1/4
40	44 1/2	2	1/4	2	9/16	66 9/16
41	45 1/2	2	1/4	2	9/16	68 5/32
42	46 1/2	2	1/4	2	9/16	69 5/8
43	47 1/2	2	1/4	2	9/16	71 9/32
44	48 1/2	2	1/4	2	9/16	72 7/8
45	49 1/2	2	1/4	2	9/16	74 7/16
46	50 1/2	2	1/4	2	9/16	76
47	51 1/2	2	1/4	2	9/16	77 9/16
48	52 1/2	2	1/4	2	9/16	79 5/32